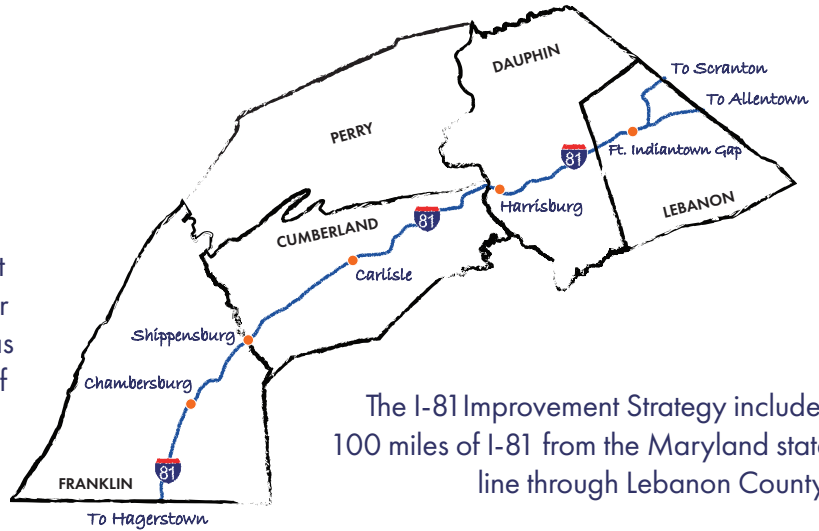




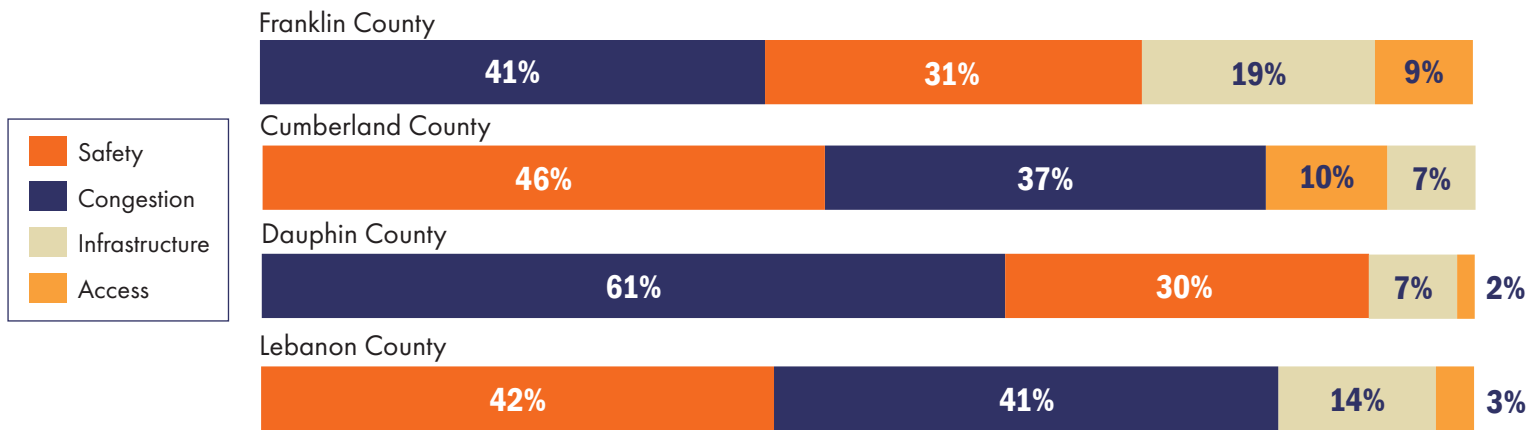
## 1,160+ SURVEYS SUBMITTED

In December 2019, an online survey was launched to identify what issues matter most to the motorists who travel along the I-81 corridor. The feedback gathered was used, along with traffic data, local development trends and asset management data, to identify and prioritize focus areas for public review. Safety and congestion consistently ranked as top priorities by survey participants. Below is a summary of the online survey feedback gathered.

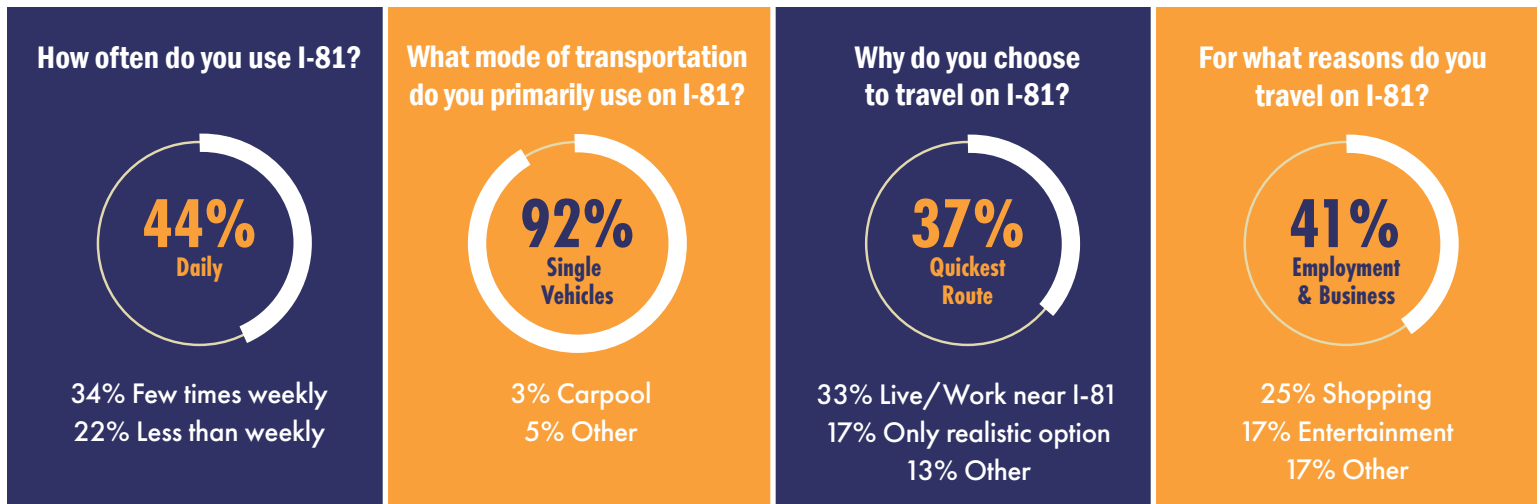


The I-81 Improvement Strategy includes 100 miles of I-81 from the Maryland state line through Lebanon County.

## MAJOR ISSUES IDENTIFIED BY COUNTY



## SURVEY PARTICIPANT PROFILE\*



\*Survey responses are not representative of all I-81 drivers, only those who submitted survey responses.

### FOR QUESTIONS, PLEASE CONTACT:

Steve Deck, AICP — Executive Director  
Tri-County Regional Planning Commission  
feedback@i81 SouthCentralPA.com